

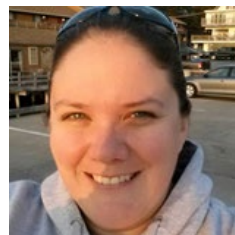


Hi Camper Families,

Welcome to the fourth edition of Girl Scouts of Eastern Massachusetts' 2026 News You Can Use. This is the last issue of this newsletter before the start of camp. You will receive important information from your specific camp(s) closer to your session(s).

If you ever have questions, [our team is here for you](#). This month, we're excited to introduce another member of our camp team.

My name is Joanna Lenahan, but around camp everyone calls me JoJo! I'm the Vice President of Operations at Girl Scouts of Eastern Massachusetts, which means I get to help dream up all the awesome adventures, activities, and camp magic you'll experience this summer. I also work with our amazing GSEMA team to make sure camp is ready for YOU — from setting up



program spaces to getting our beautiful campsites sparkling and adventure-ready!

Summer camp is one of my favorite places in the world because every day is filled with friendship, laughter, and unforgettable memories. My favorite camp activities are swimming on hot summer days and listening to everyone sing together around camp at the end of the night. There's nothing better than camp songs echoing through the trees!

I can't wait to meet all of you, cheer you on as you try new things, and make this the BEST summer ever. Get ready for campfires, new friendships, outdoor adventures, and tons of fun! See you at camp soon!

---

### **Submit your camp forms right away!**

We still have some missing camper forms that weren't submitted by the May 1 deadline. If you fall into that category, please submit them over the next couple of days. We will reach out to you weekly to ensure these important forms are submitted.

- **Don't miss the Text Opt-In Form!** It's quick to complete and ensures you receive important camp updates. Since it's

located at the bottom of your CampInTouch forms list, please be sure to scroll down so it doesn't get missed

- If you haven't submitted forms or are unsure if they are all submitted, please log in to [CampInTouch](#) to complete the required paperwork. Campers can't attend camp without this submitted paperwork.

---

### **Cancellations and Refunds**

- Deposits are non-refundable and non-transferable to another program.
- Final camp payments were due on May 1, 2026.
- To receive a full refund of camp fees minus the non-refundable deposit, you need to email [customercare@gsema.org](mailto:customercare@gsema.org) a notice of cancellation and a request for refund by **May 15, 2026**.
- To receive a 50% refund of camp fees minus the non-refundable deposit, you need to email [customercare@gsema.org](mailto:customercare@gsema.org) a notice of cancellation and a request for refund by **June 5, 2026**.
- Cancellation requests received by [customercare@gsema.org](mailto:customercare@gsema.org) after June 5 will not be refunded, regardless of whether that session has a waitlist.
- No refunds are given for campers arriving late, leaving early, or unable to attend all or part of a session for reasons such as illness.
- Questions regarding extenuating circumstances should be emailed to [customercare@gsema.org](mailto:customercare@gsema.org).

---

**How to fund a Trading Post account for overnight camp  
(Favorite, Runels, and Wind in the Pines)**

- If you plan to add funds to your camper's Trading Post account for purchases during camp, please do this before arrival through [CampInTouch](#). Log in and select the View Camp Trading Post Account link, and then click Fund to add money.
- If you would prefer to use your cookie credits, please mail them by June 12 for your camper's session to GSEMA Shop, Attn: Camp Trading Post, 265 Beaver Street, Waltham, MA 02452. Remember to include your camper's name and which camp they are attending.
- We will not accept cash or cookie credits for the Trading Post during camp check-in. Any unused funds will be returned via your original payment method by September 30.

---

**Companion offers a new digital experience for camper caregivers.**

Companion is the mobile app we're using to connect you to your child's camp experience through a personalized stream of camp content. From simplified form uploads, photo galleries, regular

updates from camp, and more, Companion connects you to camp like never before. **Get started today!**

- [Download the Companion app](#)
  - **Login** with your CampInTouch account (email and password)
  - **Upload** a reference photo of your child (optional)
  - Complete any camp forms online
  - Ensure you have push notification enabled within your phone settings so you can receive important updates from camp all year long.
- 

### **Getting Ready for Camp Made Easy**

To make getting ready for camp easier than ever, we've streamlined our information packets! Families will now receive a single, all-inclusive packet for day or overnight camp, replacing the multiple documents from years past. Our goal is to make camp communication clearer, preparation smoother, and the start of camp stress-free for every family.

Sign in to [CampInTouch](#), and you will find your packet under Forms & Documents.

The camper information packet includes info on:

- Packing lists
- Buddies

- Food restrictions
  - Camp contact information
  - And more!!
- 

### **Did you know?**

Your camper doesn't have to be in a troop to be a Girl Scout! With your camper's Girl Scout membership through summer camp, they can participate in a variety of Girl Scout activities, like [earning badges](#), [attending other Girl Scout events](#), and even [traveling the world](#)! [Juliette Girl Scouts](#) are individual members who work together with their families to curate their own experiences on their own time. Want to learn more? Email us at [juliettes@gsema.org](mailto:juliettes@gsema.org). In a troop? You can do all these, too!!

---

### **May is National Water Safety Month!**

At GSEMA, all of our pools and waterfronts at camp are staffed by trained lifeguards to keep campers and staff safe in and around the water. Every camper and staff member must take a swim check at the beginning of their camp season to assess their current swimming ability and ensure they can swim in an appropriate area. Campers will receive a colorful swim bracelet indicating their current swim level. While at camp, please be aware that we don't

provide swim lessons. We do offer games and water fun activities that will increase your camper's comfort in the water.

We adhere to these policies as accredited members of the [American Camp Association](#), as well as for [Christian's Law](#) for Massachusetts camps. If you have any questions about swimming at camp, please email us at [customercare@gsema.org](mailto:customercare@gsema.org)

---

### **Questions about Camp?**

The best way to reach our camp team or get your camp questions answered is [via email!](#)

See you at Camp!  
GSEMA Camp Team

---