



© MELISSA OSTROW

We Are Girl Scouts



BOARD OF DIRECTORS

Officers

Deborah G. Taft
Board Chair and President

Kelly Corwin
First Vice Chair

Elizabeth Fitzula
Second Vice Chair

Jane Lundquist
Treasurer

Diane McLoughlin
Secretary

Monica Roberts
Chief Executive Officer

Members-at-Large

Michael Bookman
Jeannette Buntin
Julie Cameron
Susan Carabbio
Julie Linnell Cowan
Gizella Crawford
Karan Dyson
Teresa Epperson
Trevor Frankel
Michelle Hecht
Guilda Hilaire
David Koenig
Amina C. Lobban
Mary McNiff
Kim Reinert
Gena Wilson Sullivan
Kristen Truglio

Board Nominating and Development Committee

Jeannette Buntin
Julie Linnell Cowan
Kara Curtis
Sadaf Kazmi
Lan Marinelli
Libby Murphy
Pam O'Leary
Kristen Truglio
Allison Walsh

Youth Members

Suvi Carlile, Girl Scout Ambassador
Abigail Lofurno, Girl Scout Senior
Alexandria Taylor, Girl Scout Senior
Iris Zhao, Girl Scout Senior



© MELISSA OSTROW

Monica Roberts
Chief Executive Officer



© LISA KAY KOVILIC

Deborah G. Taft
Board Chair and
President

Dear Friends,

We are at a defining moment for our organization and for the young people we serve. In a world where too often the voices and potential of women and girls are overlooked, Girl Scouts remains a place where they are seen, heard, and celebrated. Now more than ever, our youth members need us to help them develop the skills that will propel them forward and allow them to thrive in today's society. Girl Scouts was founded over 110 years ago.

Our mission—to build girls of courage, confidence, and character, who make the world a better place—has never been more vital.

As the largest girl-serving organization in Massachusetts and one of the largest Girl Scout councils in the country, we embrace our responsibility to lead. That means ensuring every girl in eastern Massachusetts has access to the opportunities, mentorship, and community that will help her thrive regardless of zip code, background, or identity. That's why we remain committed to fostering a welcoming and inclusive environment where every girl can feel supported and encouraged to grow. **If there is nowhere else our young people feel they belong, they can belong at Girl Scouts.**

This year, we've made fantastic strides to ensure our youth members have greater access to things that may have previously felt out of reach, like STEM, financial literacy, entrepreneurship, career exploration, civic engagement, outdoor skills, and leadership. Throughout this report, you will find amazing stories of how we empower our Girl Scouts to be visionaries and futurists, look beyond the limitations the data tells us exist, and dream big to achieve their goals.

We are proud of what we have achieved with your essential partnership. Our volunteers, donors, and partners make it possible for girls to learn, grow, and thrive. Together, we are preparing the next generation of leaders—young women ready to contribute with integrity, resilience, and purpose. At Girl Scouts of Eastern Massachusetts, we believe in meeting challenges head-on—and we know our girls are up to the task.

Thank you for standing with us during this important time. Your support helps ensure that every girl has the opportunity to develop into the confident, capable force our world needs. This is a moment that calls for strength, vision, and action, and we are proud to be at the forefront of this important work in our communities.

Yours in Service,



Monica Roberts
Chief Executive Officer



Deborah G. Taft
Board Chair and President



We Are Girl Scouts

Girl Scouts bring their dreams to life and work together to build a better world. Through our programs, Girl Scouts of all backgrounds and abilities can be unapologetically themselves as they discover their strengths and rise to meet new challenges—whether they want to climb to the top of a tree or the top of their class, lace up their boots for a hike or advocate for climate justice, or make their first best friends. Backed by trusted adult volunteers, mentors, and millions of alums, Girl Scouts lead the way as they find their voices and make changes that affect the issues most important to them.

Girl Scout Mission

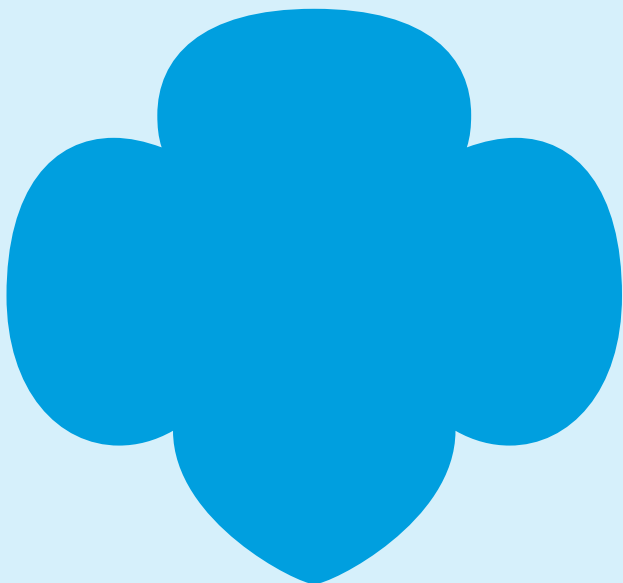
Girl Scouting builds girls of courage, confidence, and character, who make the world a better place.

Girl Scout Motto

Be prepared.

Philanthropic Statement

GSEMA is able to provide the Girl Scout Leadership Experience to thousands of girls across eastern Massachusetts thanks to the generosity of our donors, members, and volunteers.



GSEMA is the tenth-largest Girl Scout council in the USA and the largest girl-serving organization in Massachusetts.

18,855

Girl Members Served

8,836

Adult Members Served

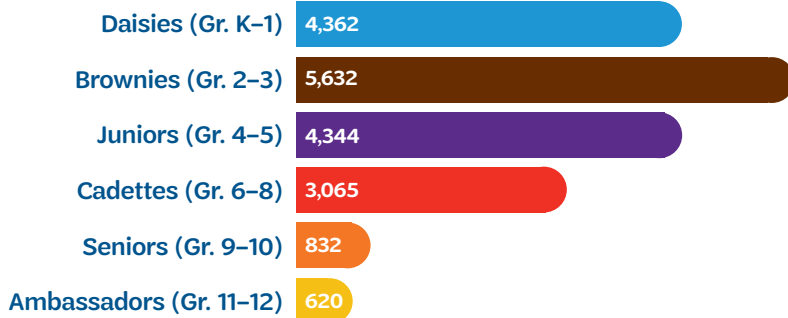
1,734

Girl Scout Troops

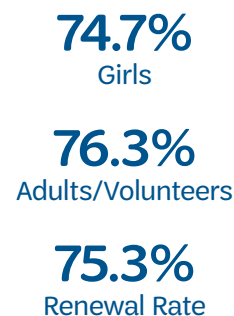
3,377

Lifetime Members

GSEMA Membership by Girl Scout Level



Retention Rates:



3 overnight camps



4 day camps

3,011 summer campers

5,362 camper weeks

Girl Scout program pillar:
OUTDOORS



Spending time in the outdoors is foundational to the Girl Scout experience. Now more than ever, we are committed to providing engaging unplugged adventures that keep our Girl Scouts coming back for more.



310

campers received
\$189,768
in financial aid to make
camp more accessible.

82%

of day camp families
say that their child has
been more positive
about their strengths
and abilities.

85%

of GSEMA overnight
camp families say that
their child has shown
an increased ability
to solve problems
independently.



Camp Runels Expansion

As we prepared Camp Runels for its 94th season, we knew we had to make a serious change. If we wanted to increase outdoor access by welcoming even more kids to camp, we needed more units! We are proud to have added an additional camping unit to our property in Pelham, New Hampshire, and started to make room for another in 2025. These five new platform tents accommodated 16 additional campers and four camp staff, which mean we welcomed 96 more summer campers in 2024.



Progression in the Outdoors

Our outdoor progression series in Boston helped Girl Scouts get excited for the Community Engagement encampment (more on page 21), teaching outdoor skills and preparing Girl Scouts for their first overnight camping trip. Current and future Girl Scouts in grades K-12—and their siblings and caregivers—were welcomed to these free events.



Unique Outdoor Experiences

The high-stakes, half-century-old Girl Scouts camp skills competition, Operation Snowflake, was open to all ages this year, including lifetime members and Girl Scout alums. Participants took on the challenge of sleeping in 19-degree weather and strengthened their teamwork, leadership, and problem-solving skills through camp-themed competitions. Two groups from Girl Scouts of Eastern Massachusetts, one youth and one adult, took home “Top Patrol” titles in their individual categories!

“Her confidence in her own abilities and independence rose after her experience—first time camping without mom! She also got used to helping with extra chores (something we work on at home, but I think GS camp does better!).”

– parent of a GSEMA overnight camper

Girl Scout program pillar:
STEM



Technological innovation moves fast, and it isn't going to wait for us to catch up. Accessible STEM education ensures our Girl Scouts are ready for the opportunities and careers of tomorrow.



10,517

STEM badges earned.

Over 45,000

participant hours for STEM programming in 2024.

THE FORMULA IS SIMPLE, BUT THE IMPACT IS HUGE.

an accepting environment + supportive adults + hands-on STEM experiences



girls who see the value of STEM and who have the interest, confidence, and competence to take the lead!



Introducing STEM ON-THE-GO

With this new mobile learning center designed to close socioeconomic and geographic access gaps, Girl Scouts can engage in STEM activities anytime, anywhere. Designed to ignite curiosity and exploration, STEM ON-THE-GO is dedicated to bringing the wonders of science, technology, engineering, and math directly to Girl Scouts in grades K-12 right in their communities. Through skills-based experiential learning activities and badge-completion activities, Girl Scouts gain a fundamental understanding of the core concepts necessary to become future leaders in STEM.



Leveraging STEM Partnerships

In 2024, we grew our STEM programming exponentially to provide amazing activities for thousands of Girl Scouts of all ages. Our annual **STEM Challenge** moved to the Museum of Science, where Girl Scouts learned from women engineers from RTX (pictured left). At **Girl Scouts Engineer Magic**, Girl Scouts participated in workshops hosted by Wentworth Institute of Technology and the Society of Women Engineers. Girl Scouts explored Boston University's Engineering Product Innovation Center (EPIC) at **Shine Like an Engineer** and utilized its cutting-edge equipment, including a laser cutter and soldering iron, to design and construct their own lighted box (pictured on page 8). For Girl Scouts interested in computer science, Google facilitated a **Think Like a Programmer Journey** at their Cambridge office with sessions on how to learn to code, train a computer using artificial intelligence, and gain an understanding of the app design process—all while learning how Google uses these things to change the world through innovation.



STEM Fest

In 2024, GSEMA welcomed over 500 Girl Scouts of all ages to Camp Cedar Hill, Waltham, for our 12th Annual STEM Fest. Over 40 local partners presented exciting hands-on activities in many STEM disciplines such as chemistry, physics, automation, computer science, biology, electricity, and more!

Girl Scout program pillar:
LIFE SKILLS



Our robust curriculum empowers our Girl Scouts to explore their interests, try new things, and learn practical skills they need to thrive as productive and successful members of society.



Trying new things without fear of judgment enables Girl Scouts to gain the kind of resourcefulness and tenacity that will allow them to thrive in every stage of their lives.

1 in 3
women in the US
over 50 million
are Girl Scout alums.

68%
of alums assert that
Girl Scouts has had
a positive impact on
their lives.



Vacation Week Career Academy

Not every teenager has a clear understanding of what they want to do after high school or college. Many young people need a little preparation, which is why we hosted four day-long career exploration workshops for our Girl Scout Cadettes, Seniors, and Ambassadors. With the help of some of our corporate partners, our Girl Scouts were able to experience a day in the life of a public media producer at GBH, go behind the scenes at P&G Gillette, discover the world of patient care at Emerson Hospital, and explore 3D printing technology at Formlabs.



Journey Award Events

Girl Scouts in grades 6-12 came together to learn about sisterhood through conquering stereotypes and creating life-long friendships. Cadette aMAZE, Senior Mission Sisterhood, and Ambassador Your Voice, Your World Journey Award events empowered Girl Scouts to think about issues they want to influence and strategize how they can use their Girl Scout networks to implement sustainable solutions.



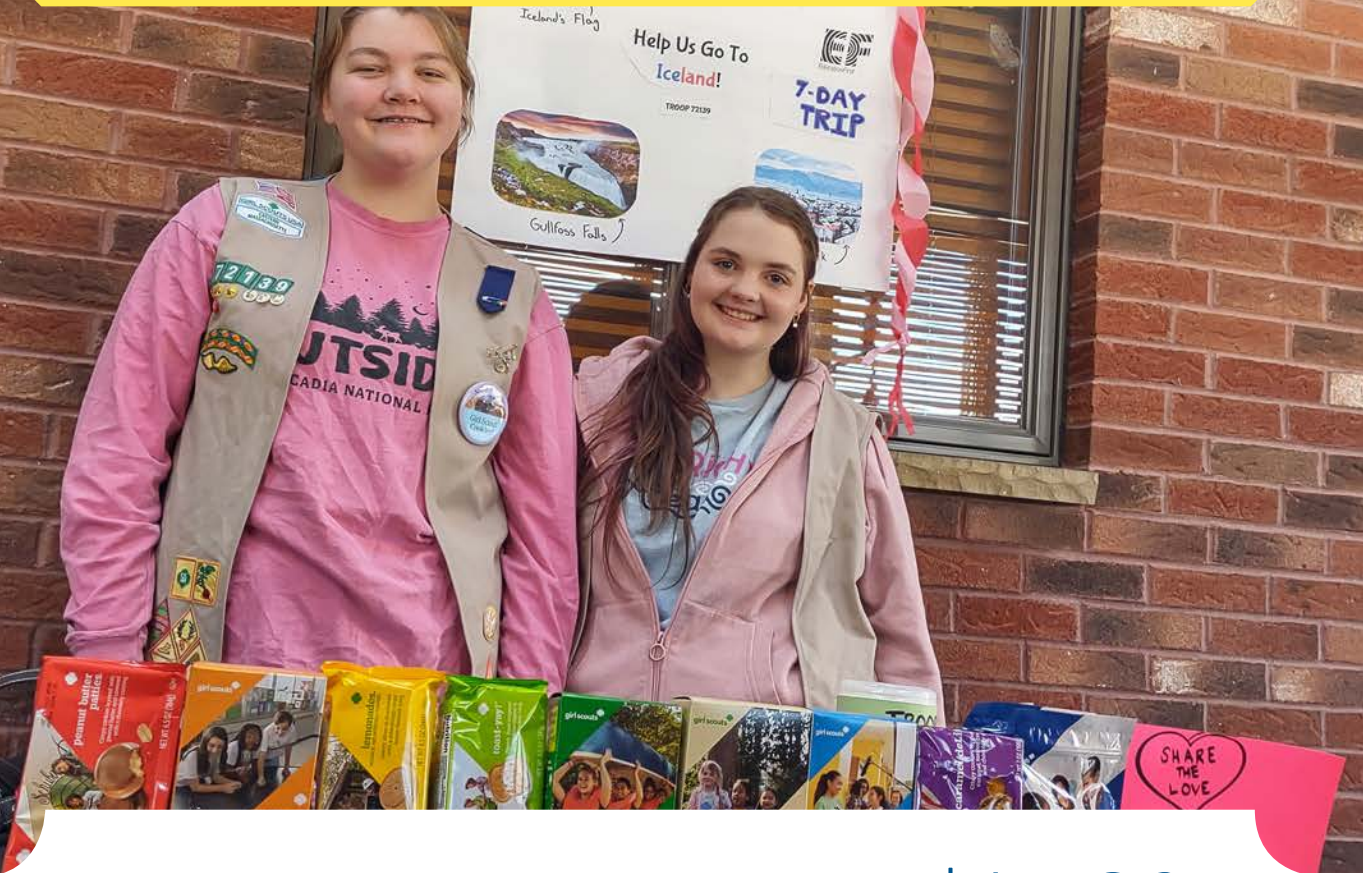
Menstrual Inequity Service Project

Girl Scouts across eastern Massachusetts honored Indigenous Peoples' Day with a day of service in collaboration with Sew Studio Southborough and The Kwek Society. Girl Scouts pieced together, sewed, and filled moon time bags with pads and liners to help fight menstrual inequity in indigenous communities. This initiative aims to reduce time out of school, mitigate health risks, and bolster dignity amongst those who menstruate.

Girl Scout program pillar:
ENTREPRENEURSHIP



When a Girl Scout asks someone to buy a box of cookies, they're asking for an investment in their future. Girl Scout entrepreneurs take their dreams into their own hands, while we provide them with the tools for success.



Girl Scouts learn five essential skills through our product programs: goal-setting, decision-making, money management, people skills, and business ethics.

14,012

local Girl Scouts participated in the 2023-24 Cookie Program, earning proceeds of **\$2,143,468.**

\$1,529

is the average amount of funds earned per troop to fund adventures, community service projects, and badge exploration.



Girl Scouts Are Smart Cookies

In early 2024, Liberty Mutual hosted Girl Scouts at their Boston headquarters for an engaging, hands-on financial literacy event, *How to sell Thin Mints and Everything Else*. It focused on helping Girl Scout Daisies, Brownies, and Juniors earn their Cookie Business badges. With guidance from Liberty Mutual volunteers, Girl Scouts participated in five age-appropriate activities to learn about marketing, goal-setting, managing money, and connecting with customers—essential skills for entrepreneurial success. At Girl Scouts of Eastern Massachusetts, we are committed to empowering Girl Scouts to create a future where financial independence is within their reach. At a time when financial education remains widely inaccessible, partnerships like ours with Liberty Mutual help fill these critical gaps.



Cookies for a Cause Donation Program

Every year, we donate thousands of packages of Girl Scout Cookies to local charitable organizations as a part of our annual Cookies for a Cause Girl Scout cookie donation drive. Girl Scouts from across eastern Massachusetts collected over 28,000 packages of cookies and distributed them to more than 40 local organizations. Cookies for a Cause helps Girl Scouts learn about helping those in need and giving back to the community.



Top Cookie Entrepreneur

For the second consecutive year, Girl Scout Brownie Emma earned the role of CEO for the day, our council's top Cookie Program recognition, when she sold 7,443 packages of Girl Scout Cookies during the 2023–24 season. Emma enjoyed the VIP treatment at Camp Favorite, where she took a behind-the-scenes tour of camp, met with some of our wonderful staff (including former CEO Barbara Fortier), and learned to sail!



Troops 67202 and 83121 had a STEM-fueled solar eclipse party which included recording the time and phase of the eclipse, building UV-resistant shelters, and creating sun prints using UV-reactive paper.

Dennis-Yarmouth Girl Scout troop leader—and drone pilot—Cyndi Penny met with Girl Scout Cadette Troop 67940 for a lesson on the latest drone technology, including how to obtain proper licenses, job opportunities, and more.



These Girl Scout Cadettes are certified to save lives! This year, members of troop 76116 became certified in Pediatric First Aid, Adult/Child/Infant CPR, and AED by attending a council training session.



Ayer Junior Troop 83803 traveled to Acadia National Park and hiked, rode in horse-drawn carriages, went canoeing, had traditional tea and popovers, ate Maine blueberries, visited a lumberjack show, and toured Bar Harbor!

Troop 82487 visited New York City, where they took in all the famous sights, including the Empire State Building, Times Square, Rockefeller Center, and the Drama Book Shop, among others.



Girl Scout Cadettes from Holliston recently earned their Woodworker badge by building 14 miniature picnic tables for their local squirrel population.

HIGHEST AWARDS

Through the Highest Awards, Girl Scouts make the world a better place every day. They identify a problem in their community and develop a sustainable solution that will have a positive impact for many years to come.



99%

of Gold Award Girl Scout alums take on leadership roles in their everyday lives.

87%

of Gold Award Girl Scouts agree that earning their Gold Award gave them skills that help them succeed professionally.

72%

said earning their Gold Award helped them get a scholarship.



2024 GSEMA Gold Award Girl Scouts

Phoebe Anthony
 Alyssa Ao
 Shreya Atluri
 Elizabeth Bedard
 Charlotte Bizup
 Hannah Bryson
 Lauren Donahue
 Lucille Dwyer
 Kathryn Fischmann
 Sophia Fitzgerald

Sabrina Garcia
 Sanjana Gudipati
 Blu Howes
 Yuyuan Huang
 Ciarra Hupp
 Maleah Jensen
 Bella Kim
 Amy Loveless
 Helen Mager
 Sofia Martinez

Samantha McCoy
 Carissa McLane
 Courtney Mitchell
 Corinne Morgan
 Allison Morley
 Zoe Musante
 Bibi Noury-Ello
 Erica O'Donnell
 Avani Rebbi
 Tara Sawrikar

Zoe Seiger
 Lile Simmons
 Nadia Sovick
 Ashley Stracco
 Vanessa Villalba
 Ella Walgreen
 Athena Wang
 Ella Zhu



The Girl Scout Gold Award is the highest and most prestigious award in Girl Scouting. From STEM to food insecurity, educational resources, mental and physical well-being, and community-building tools, our Girl Scouts make the world a better place every day.

Read about their inspiring projects in our Gold Award Year Book: bit.ly/goldaward2024



Natalia Salinas Is One of 50 to Be Honored with the GSUSA Scholarship

Girl Scout Natalia Salinas was awarded a \$5,000 scholarship from Girl Scouts of the USA in recognition of her Gold Award project addressing the issue of underrepresentation of Latinas in STEM-related occupations. Natalia dedicated her Girl Scout Gold Award project to creating new opportunities to improve how young Latinas are introduced to STEM principles during middle school and developed a STEM literacy out-of-school program for students in grades 6-8 in the Lawrence, Massachusetts, community. She developed programs held during January, February, and March of 2023 that reached between 75 and 90 children through live workshops and an online course.

Mallory Jacobs Receives Girl Scout Medal of Honor

In August 2024, Girl Scout Cadette Mallory Jacobs and her family were exploring natural caves in New Hampshire when her five-year-old cousin Emily unknowingly strayed from the path and became trapped in a narrow part of the cave. Emily, scared and unable to turn around or escape, began screaming for help. Despite being too far back in line to see what was happening, Mallory realized she was small and fast enough to help. She quickly climbed out of the cave and went alone to find a park employee. With Mallory's quick thinking, help arrived, and Emily was safely freed without injury.





Girl Scout Junior Troop 82266 earned their Bronze Awards by planning, constructing, and stocking a Pet Supplies Pantry located at the local dog park.

Girl Scout Cadettes Sophie and Raleigh earned their Silver Awards by building the Necessities Co-op, a little free pantry for items residents cannot obtain through federal programs like the Supplemental Nutrition Assistance Program (SNAP) or Women, Infants, and Children (WIC).



September is National Recovery Month, and Girl Scout Cadette Troop 82482 earned their Silver Awards by hosting Everett Stop the Stigma Day. On Thursday, September 26, the troop hosted free Narcan training and had a resource table at City Hall for all to learn about substance misuse prevention and recovery programs offered in the city.



Our Community Engagement team provides individualized assistance to create community-specific solutions that bring the Girl Scout Leadership Experience directly to girls who may not otherwise have access.



1,946
Girl Scouts supported across
159
active troops.

30
total communities served, including recent expansion into Lowell, Quincy, and Randolph.

120
Girl Scouts and their families attended programs hosted by Community Engagement staff.



Third Annual Community Engagement Encampment

On June 8 and 9, 150 Girl Scouts and 50 adults attended our annual no-cost encampment overnight at Camp Runels in Pelham, New Hampshire. All attendees had access to free bus transportation, were provided several warm meals, and engaged in classic outdoor activities. For most of the attending Girl Scouts, this weekend is their first experience with outdoor camping.



Language as a Bridge to Inclusion

Girl Scout Troop 84614 is not only the largest troop in East Boston, with 25 Girl Scouts, but they are also the first monolingual Spanish-speaking troop in eastern Massachusetts. Formed in the fall of 2023 by Lilliana Arteaga, the troop is based out of Umana Academy and is supported by eight volunteers, including school staff who specialize in working with youth with autism, ensuring the troop is inclusive and accessible to neurodivergent girls. Lilliana's advocacy for Spanish-language resources and her dedication to supporting families in the community have been essential in the growth of the troop.



Roxbury and Dorchester Cookie Kickoff

Twenty-six Girl Scouts attended this event to learn introductory financial literacy and entrepreneurship skills, earn their Cookie Pin, and prepare for the Girl Scout cookie sale. Girl Scouts practiced their pitch, set goals, and had the chance to sample Girl Scout cookies. Additionally, this provided a much-needed opportunity for volunteers to network with each other and share best practices and local resources. One hundred percent of troops in attendance participated in the Girl Scout Cookie Program.

Our volunteers and donors make it possible for Girl Scouts to try new things, learn valuable life skills, reach their goals, make lifelong friendships, explore the outdoors, and uncover leadership opportunities.



12,213

registered Girl Scout adults—more than half are Girl Scout alums.

150

exceptional volunteers were honored on May 19, 2024, at our Volunteer & Donor Recognition Celebration.

187

new lifetime members
28
bricks dedicated on our Pathway to Leadership.



Recruiting and Retaining Volunteers with Support from AmeriCorps' Volunteer Generation Fund (VGF)

In 2024, GSEMA received requests for around 350 high adventure activities, 150 local overnights, and 50 national or international trips, all requiring an approved first aid-trained volunteer. To meet this demand, GSEMA offered H-S-I Pediatric First Aid with AED and CPR training, doubling the number of volunteers trained from 167 in 2022-23 to 351 in 2023-24. Thanks to AmeriCorps' VGF funding, we were able to provide training in remote areas, manage larger classes in denser regions, purchase diverse training manikins, and expand the first aid instructor team from 17 to 24, reducing volunteer burnout and ensuring safety for thousands of Girl Scouts. Learn more about the AmeriCorps partnership: bit.ly/gsema-ameri-corps.

“I have been taking CPR/First Aid classes through various organizations for over 25 years. Today was the first time that I had the opportunity to practice CPR on a female manikin. I have been thinking about the absolute absurdity of this reality all day.”

– Girl Scout volunteer Sarah Hammond-Todisco





Leading Through Service: Committees and Advisory Groups

While supporting a local Girl Scout troop is the most familiar way adults get involved, there are many other meaningful opportunities to contribute at the council level. From fundraising and governance to facilitating programs, these dedicated volunteers play a vital role in advancing the mission of Girl Scouts of Eastern Massachusetts. We're deeply grateful for their leadership and commitment.

Cookies & Cocktails Committee

Abigail Clutz, Chair
Cordy Elkins, Chair
Gena Wilson Sullivan, Chair
Serenity Belo
Natalie Oakes
Shannon O'Leary-Small

Girl Scout Museum Volunteers

Lori Spinella Beverage
Janet Coombs
Lynn Saunders Cutter
Francine Edwards
Elsie Eigerman
Roberta Green
Margaret (Peg) Juppé
Cathy LeBlanc
Ruth Leiby
Pat Leverone
Clare Livak
Betty MacKenzie
Nancy Marshall
Amanda Miller
Maj-Britt Moreton
Sandy Publicover
Kal Ricker
Lois Roth-Johnson
Renee Sack
Stacy Spies
Tricia Tilford
Val Wilcox
Elizabeth Woyke

Gold Award Committee

Katherine Albert
Amanda Cheung
Lucy Costa
Vicki Crosson
Kerin Deely
Mabel Dominguez
Amy Fong
Sara Grady
Christine Harnett
Carolyn Hely
Mikayla Hopkins
Diane Kimball
Susan Kohlman
Eileen Koury-Judkins
Katelyn Lantz
Caitlyn LeBlanc
Cathy LeBlanc
Courtney Medlin
Natalie Oakes
Jessi Robinson
Suellen Robinson
Sarina Sherwin
Lisa Silletti
Gail Spring
Sally Webster
Judith Wilchynski

GSEMA Regional Council Delegates

(as of September 30, 2024)

ADULTS

Karla Alfred
Megan Bliamptis
Dawn Brooks
Marie (Skip) Carver
Jennifer Coombs
Megan Cuddy
Nicole Haberman
Haley Hein
Debra Holland
Kelsey Holt
Alyssa Hurley
Margaret (Peg) Juppé
Candice Lancaster
Sarah Leshay
Cathy Lewis
Calista Maharaj
Kimberly Matz
Katherine McEneaney
Carolyn Palmer
Sarah Ray
Suellen Robinson
Gail Spring
Lindsay Tomlinson
Jordan Watson

YOUTH

Elizabeth Brown
 Elaina Cacchiotti
 Maryeileen Kelleher
 Sudhiti Marri
 Nora Strahs

Alternate Regional Council Delegates

YOUTH

Matilda Penny
 Phoenix Ray
 Avery Grover

GSEMA National Council Delegates

(as of September 30, 2024)

ADULTS

Lori Spinella Beverage
 Tarene Cunningham
 Holly Garcia
 Cecilia Geyer
 Denise Lau
 Rebecca Myers
 Sandra Publicover
 Jessi Robinson
 Hope Roth
 Amy vanNederpelt
 Judith Wilchynski
 Donna Yang
 Madelyn Yang

Alternate National Council Delegates

ADULTS

Jeana diNatale
 Elsie Eigerman
 Rachael Fusco
 Tammy Geyer
 Elli Goeke
 Christine Johansen
 Monique O’Connell
 Marianne O’Connell
 Marielle Thorne

Team Run Like a Girl Scout Committee

(ASICS Falmouth Road Race)
 Diane McLoughlin, Team Captain

Leading Women Awards Committee

Karan Dyson, Chair
 Gizella Crawford
 Katelyn Frueh
 Julie Kahn
 Melinda Margetson
 Helyn Oatis

STEM Fest Committee

Leen Attia, Girl Scout Ambassador
 Sara Burke
 Caitlin Fitzmaurice
 Meika Hayles
 Deborah Moore-Lai
 Francesca Nannizzi
 Nicole Sjoblom, PhD

Volunteer Recognitions Committee

Chrissy McBride, Chair
 Holly Garcia
 Samantha Hurley
 Linda McNamee
 Debra Nearing
 Jessi Robinson
 Gail Spring
 Marielle Thorne

Women’s Advisory Network

Patricia Hennessy Chadwick
 Lauren Clausen
 Allison Cree
 Judge J. Elizabeth Cremens, (Ret.)
 Tracy Curley
 Heather M. Ford
 Barbara Fortier
 Kristie Gill
 LeAnne Grillo
 Katherine A. Hesse, Esq.
 Lindsay Jubelt, MD, MS
 Freddie Kay, Esq.
 Deborah M. Kolb
 Laura Lane
 Diane L. Longtin
 Patricia Parcellin
 Valerie Pontiff
 Jane Puffer
 Janet Richardi
 Patricia C. Romeo-Gilbert
 Pamela Salkovitz
 Carol Sapoznik
 Linda Schuller
 Rebecca Schultzberg
 Mary Shapiro
 Sarina Sherwin
 Lauretta Siggers
 Dr. Elizabeth Simmons
 Cynthia Stoldt
 Eileen B. Sullivan
 Alison Taunton-Rigby, PhD, OBE
 Laura Van Zandt
 Diane M. White
 Donna Yang





Volunteer and Donor Recognition Celebration

On May 19, 2024, Girl Scouts of Eastern Massachusetts celebrated the powerful partnership between our donors and volunteers whose shared generosity fuels our Movement. Whether through time, resources, or both, their contributions have made a lasting impact on the lives of Girl Scouts across our community. We are deeply grateful for their commitment to advancing our mission.

Appreciation Pin

Karla Alfred, Holliston
 Melissa Basmaji, Marlborough
 Michelle Bedy, Groton
 Kimberlee Burton, South Boston
 Samantha Charette, Lowell
 Diane Courtney, Lynnfield
 Catherine Ehret, Holliston
 Fabienne Eliacian, Hyde Park
 Jannell Evans, Woburn
 Barbara A. Gibbs, Hyde Park
 Heather Grimmett, Wayland
 Katrina Wilcox Hagberg, Littleton
 Jane Hamel, Medford
 Allie Hamner, Danvers
 Ashley Hasling, Haverhill
 Cheryl Iverson, Stoughton
 Meredith Keybl, Concord
 Astride Lisenby, Medford
 Ann Mark, Braintree
 Angela McIntosh, Reading
 Melissa Miller, Middleboro
 Amy Mills, Holbrook
 Melissa Purnell, Marlborough
 Jennifer Ramirez, Maynard
 Laura Rankin, Taunton
 Amy Reimann, Acton
 Melissa Scartissi, Hanson
 Melissa Schoenfeld, Concord
 Rebecca Scott, Medford
 Courtney Scott, South Boston
 Jennifer Sears, Stoughton

Michelle Shoemaker, Acton
 Tammy Smith, Lowell
 Evelyn Thibault, Holliston
 Jennifer Tomase, Stoneham
 Karla Torres-Welch, East Boston
 Conevery Bolton Valencius, Quincy
 Kay Wilson, Haverhill

Five-Year Sustained Service

Kathleen Guinee, Acton-Boxborough
 April Kelly-Oster, Walpole
 Laura Magee, Foxborough
 Kelly Moore, Hingham
 Holli Murray, Maynard
 Andrea Parent, Waltham

Honor Pin

Katherine Durant, Canton
 Holly Garcia, Everett
 Jennifer Klopotoski, Gloucester
 Betsy Nunes, Peabody
 Gena Sullivan, North Andover

Lifetime of Service

Maureen Buckley, Stoneham
 Brenda Gaynor, Nahant
 Jeanne Hobbs, Lexington
 Wynelle Hummel, Woburn
 Cathy LeBlanc, Burlington
 Gail Spring, Quincy

Red Rose Award

Felicia Beaton, Peabody
 Katherine Durant, Canton

Thanks Badge

Jessi Robinson, Bridgewater
 Marielle Thorne, Hingham

Thanks Badge II

Jen Coombs, Arlington
 Deb Holland, Lexington
 Margaret (Peg) Juppé

President's Award

Billerica Service Unit
 GSEMA Travel Consultants
 GSEMA First Aid Instructors
 Whitman/Hanson Service Unit

Helen Storrow Heritage Award

Barbara Fortier and Karen Edlund,
 Boston

Helen Storrow Heritage Award

Each year, GSEMA honors an individual or volunteer committee whose philanthropic endeavors and dedication to preserving our rich history have significantly strengthened our organization with the Helen Storrow Heritage Award. In 2024, we were proud to recognize Barbara Fortier and Karen Edlund of Jamaica Plain for their remarkable contributions to Girl Scouts.

For over 25 years, Barb and Karen's contributions ranged from participating in annual appeals to providing scholarships for campers, organizing fundraising events, and even including the Girl Scouts of Eastern Massachusetts in their future estate plans. Barb, in her various roles within GSEMA (board member, chief operations officer, and recently retired CEO), has been a champion of encouraging staff to contribute at all levels, helping us achieve nearly 100% participation in staff giving.

Additionally, Barb and Karen's presence at GSEMA fundraising events is unwavering. Not only do they attend, but they also purchase full tables, bringing friends and family to share in the transformative experiences that Girl Scouting offers. Many of their guests have become dedicated and substantial donors, multiplying the reach and impact of their philanthropy. Their enthusiasm is contagious, sparking friendly rivalry and raising significant funds for our cause. Through their lifetime contributions,

Barb and Karen have become among the largest donors to our council, setting a powerful example and leaving a lasting legacy that reflects their passion for the Girl Scouts' mission. Their steadfast support and joyful engagement truly make them pillars of philanthropy in Girl Scouts of Eastern Massachusetts.





Building Capacity with the Women’s Advisory Network

The Women’s Advisory Network (WAN) has seen remarkable growth and impact over the past year, thanks to the dedication and leadership of cochairs Lauren Clausen and Carol Sapoznik. WAN, originally envisioned to unite inspiring women in support of Girl Scouts, has grown into a vibrant community of over 30 professionals shaping the future of Girl Scouts in eastern Massachusetts.

Carol’s journey with WAN began at the conclusion of her GSEMA board term when a close friend encouraged her to organize a group of dynamic women to serve as empowering role models for Girl Scouts. With the support of the GSEMA leadership, she began recruiting former board members, Leading Women Award honorees, and those eager to support Girl Scouts of Eastern Massachusetts.

Lauren joined WAN as cochair alongside Carol a few years ago, shortly after moving to Boston. She was eager to expand her network and make a lasting impact with a mission-driven organization. Three years later, Lauren is proud of the group’s continued success and involvement. The network is now exploring ways to engage Gold Award Girl Scouts who are transitioning into their careers after college, and Lauren finds it incredibly rewarding to be part of shaping the future of these remarkable young women.

Together, these inspiring women are making an indelible impact on the GSEMA community, supporting not only the current generation of Girl Scouts but also paving the way for future leaders. The Women’s Advisory Network continues to be a testament to the power of collaboration, growth, and dedication to the mission of Girl Scouts.

“As ambassadors of Girl Scouts and our council, members of WAN are committed to supporting our new CEO, Monica Roberts, and her initiatives while building meaningful friendships around a shared mission. It’s a powerful pathway to get involved, learn about the council, collaborate, and, most importantly, have fun!”

– Carol Sapoznik

Visit bit.ly/gsema-WAN learn more about joining the Women’s Advisory Network.



JULIETTE GORDON LOW SOCIETY

The Juliette Gordon Low Society recognizes individuals who support Girl Scouting through their own planned giving. It is said that “writing a will is a gift of love.” In reality, no matter our current age or financial means, even a small amount of planning ensures that our final wishes are honored, and makes it easier on our family and friends. Through the Juliette Gordon Low Society, a planned gift (of any amount or percentage) can also benefit the leadership development for girls that Girl Scouting provides.

If you are thinking about creating or updating your estate plans, GSEMA is fortunate to be able to offer this service and resources at no charge. Members are honored annually and presented a Juliette Gordon Low society pin, an acknowledgement that their forethought and legacy will benefit girls for generations to come. Please email legacy@gsema.org with any questions or for more information about the Juliette Gordon Low Society. We are grateful to the following members of the Juliette Gordon Low Society whom we can honor, both named and anonymous.

| | | |
|---|---------------------------|-------------------------------------|
| Anonymous (3) | Joanne and Ralph Johnson* | Elisabeth B. Roitman* |
| Erik and Eva Andersen | Joan M. Kelly* | Patricia C. Romeo-Gilbert |
| Dianne Belk and Lawrence Calder | Nancy Kiehnle | Linda Rossetti |
| Monica Ann Bellevue* | Kathryn King | Paula J. Ruozi |
| Lori Spinella Beverage | Sonia Kwon | Renee Sack |
| Dorothy Lozowski Boisvert | Laura P. Lane | Carol Sapoznik |
| Mary Margaret Browne | Diane L. Longtin | Celia Schulhoff* |
| Kelly and Robert Corwin | Cari Palmer Lord | Linda Schuller |
| Lynn Saunders Cutter and John Cutter | Jane L. Lundquist | Crystal Sekerak |
| Priscilla and Neiland Douglas | Mary-Ann Macaione* | Gail Shapiro |
| Pricilla Doyle | Anne Mastro-Valade | Peggy and Jonathan Stevens* |
| Amy Fong | Diane McLoughlin | Deborah Taft and Terri Rutter |
| Barbara Fortier and Karen Edlund | Marcia Metz | Marielle Thorne |
| Rachael Fusco | Regina M. Mullen | Tricia J. Tilford |
| Tammy Geyer | Rebecca Myers | Amy vanNederpelt |
| LeAnne Grillo | Edward Napekoski | Diane M. White |
| Carole Herman | Bess Newton | Zuania Wood |
| Margaret Gordon | Judith Nitsch | Barbara Worley and Robert Vogtli |
| Gillispie Iwanchuk | Roc and Ren O’Connell | |
| Ann Schwarz Janzen* | Charmayne Platt | |
| | Alma Pontz Estate* | |
| | Sandra Publicover | |
| | Jessica Robinson | * Deceased |



Donor Spotlight: Diane White

Diane White is one of Girl Scouts’ biggest cheerleaders and supporters, known for her extraordinary commitment to the organization.

She was an active Girl Scout in Indiana and earned the First Class and Curved Bar Awards—precursors to today’s Girl Scout Gold Award. Diane’s involvement continued as a Girl Scout leader for her two daughters’ troops in Wayland, Massachusetts, as past president of the Patriots’

Trail Girl Scout Council, a docent at the Girl Scout Museum at Cedar Hill, a national board member of Girl Scouts of the USA, and a member of the Olave Baden-Powell Society.

While volunteering at the Girl Scout Museum, Diane coauthored *Cedar Hill Memories* with fellow volunteer Pat Ross, chronicling the estate’s transformation into a Girl Scout property. Their research highlighted Helen Storrow, a Boston philanthropist and friend of Juliette Gordon Low, who was instrumental in procuring the estate and converting it for Girl Scout use. Helen’s actions not only shaped the future of Girl Scouts locally and nationally, but also internationally by donating the funds for the construction and operations of Our Chalet, the first of five World Association of Girl Guides and Girl Scouts (WAGGGS) World Centres. Inspired by Helen’s legacy, Diane served nine years with the Our Chalet Foundation, supporting its continued operation.

Diane has received both local and national recognition for her contributions to Girl Scouting, including the Juliette Low World Friendship Medal for advancing global understanding of Girl Scouting, the Thanks Badge II, and the Helen Storrow Heritage Award for her philanthropic support to Girl Scouts of Eastern Massachusetts.

From her current home in Florida, Diane continues to share her passion and generosity by supporting operations, camperships, and the beloved Girl Scout Museum at Cedar Hill. Her dedication ensures that Girl Scout programming, especially the unforgettable experience of Girl Scout Camp, is accessible to all. She has impacted the lives of many, many Girl Scouts over the years, and she is the proud granny of two Gold Award Girl Scouts.

Diane White (center) was awarded the Juliette Low World Friendship Medal, one of the most prestigious Girl Scout awards an individual or council can receive, given to those “who have enriched and leveraged the global understanding of Girl Guiding and Girl Scouting to grow responsible global citizens.”





COURTESY OF THE BOSTON GLOBE

Corporate Partner Spotlight: Suffolk

In March 2024, Girl Scouts of Eastern Massachusetts unveiled its newest STEM curriculum in partnership with Suffolk, one of the largest and most innovative construction and real estate enterprises in the country.

Brownies Who Build, an expansion of Juniors Who Build, which launched in 2023, was created to help Girl Scouts ages 7-9 understand the steps of the construction process, potential construction careers, and steps to building something themselves.

The Brownies Who Build curriculum takes Girl Scouts through a five-step process of constructing a school, with options to choose an activity for each step. Upon completing the program, Girl Scouts will have gained knowledge of design and coordination, cost and estimation, planning, site management and safety, and trades coordination.



COURTESY OF THE BOSTON GLOBE

The new curriculum is part of Suffolk's 10-year partnership with GSEMA, which seeks to diversify and strengthen the STEM pipeline by providing the resources and education that young women and girls need to pursue STEM careers. Suffolk's "Rebuild the Ratio" initiative aims to bring 10% of all Girl Scouts in eastern Massachusetts through the curriculum, inspiring interest in construction-related careers and helping to bridge the gender gap in the industry.

The list in this report reflects all cash gifts, pledge payments, and in-kind donations recorded during fiscal year 2024 (October 1, 2023–September 30, 2024). We have taken great care to ensure the accuracy of this report and offer our sincere apologies for any errors or omissions. Please contact Annie Garmey at agarmey@gsema.org with any questions.

\$100,000+

AmeriCorps
Department of Elementary and
Secondary Education

\$50,000–\$99,999

Anonymous
Liberty Mutual Foundation
PwC
Suffolk
Women's Foundation of Boston

\$25,000–\$49,999

EY
Mass General Brigham Health Plan
National Grid
P&G

\$10,000–\$24,999

Akamai Foundation
The Commonwealth of
Massachusetts
Emerson Health
Google
Nathaniel and Elizabeth P.
Stevens Foundation
Sanofi
State Street
Winfield S. Russell Trust

\$5,000–\$9,999

Abbot and Dorothy H. Stevens
Foundation
Bentley University
The Cape Cod Foundation
Daniel W. Field Trust
Eastern Bank
Great Escape Committee

Hood
The Jennifer Kane Scholarship
and Charitable Trust
M&T Bank
MathWorks
Michele E. Dufault Foundation
Peggy Meyerhoff Pearlstone
Foundation
Verizon New England
Whitsons Culinary Group

\$2,500–\$4,999

AAFCPAs
Aubert J. Fay Charitable Fund
Bethesda Lodge #30 IOOF
Better Business Bureau East MA,
ME, RI, VT
Bluestone Bank
Boston Red Sox
Boston Unity Soccer Partners
Cabot Risk Strategies
Cambridge Trust Company
The Charlotte Home
Digital Federal Credit Union
Essex County Community
Foundation
Frederick Lobl for Charities, Bank
of America N.A., Trustee
Girl Scouts of the USA
GoTo
Lend A Hand Society
Lindauer
Massachusetts Business
Roundtable
MFS Investment Management
MutualOne Charitable Foundation
Rockland Trust
South Shore Bank

\$1,000–\$2,499

Adelaide Breed Bayrd Foundation
Amelia Sillman Rockwell & Carlos
Perry Rockwell Charities
American Legion Post #308,
Orleans, MA of The Cape Cod
Foundation
Bank of America
C.M. Life Insurance Company
Citizens Bank
Dedham Savings
Draper
Eversource
Folan Waterproofing &
Construction Co., Inc.
JP Morgan Chase Foundation
LPL Financial
The May Group
Maynard Community Chest
Morgan Stanley
Ocean Spray
Palmer & Cay, LLC
Pfizer Foundation
Raytheon
Robert Treat Paine Association
THL Partners
Waltham Community Foundation

Up to \$999

A. W. Perry
Allen T. Watson Trust
Amelio Della Chiesa Trust
The Boch Center
Bowditch & Dewey, LLP
CVS Health Foundation
Kendra Scott
Make-A-Wish Massachusetts and
Rhode Island
Medtronic Foundation
Murray & MacDonald Insurance
Services, Inc.
Needham Memorial Trust
Northeastern University
Rotary Club of Waltham
Synopsys Inc.
Takeda
USAA
Waldron H. Rand & Company, P.C.
Windstream

Helen Osborne Storrow Society | \$50,000+

- The Linda Hammett Ory & Andrew Ory Charitable Trust ●
- The Horn Family ●
- Diane M. White ●

Pearl Society | \$10,000–\$24,999

- Lori Spinella Beverage ●
- Stephanie and John Connaughton
- Ami Kuan Danoff
- Teresa Epperson ●
- Judith Nitsch ●
- Husband of Augusta Crocker Stewart ●
- Deborah Taft and Terri Rutter ●
- Tricia J. Tilford ●

Red Rose Society | \$5,000–\$9,999

- Kelly and Robert Corwin ●
- Elizabeth Fitzula ●
- MB Flanders ●
- Barbara Fortier and Karen Edlund ●
- Diane and George McLoughlin ●

- Kimberly Reinert ●
- Patricia C. Romeo-Gilbert ●
- Carol Sapoznik ●
- Gena Wilson Sullivan ●
- Kristen Truglio ●

Trefoil Society | \$2,500–\$4,999

- Julie Cameron ●
- Lynn Saunders Cutter and John Cutter ●
- Annie Garmey ●
- Michelle Hecht
- Jane L. Lundquist ●
- Laura Magee ●
- Donna and John Morrison
- Rebecca Myers ●
- Steven Onishi and Dawn Alling ●
- Laura M. Raisty ●
- Robert Rasmussen and Sylvia Menzl ●

1912 Society | \$1,000–\$2,499

- Anonymous (2) ●
- Christine Bahtiarian ●●

- Elaine Baker ●
- Joseph M. Bizup ●
- Michael Bookman
- Alicia L. Brock-Fisher ●●
- Jeannette Buntin ●
- Susan Carabbio ●
- Patricia Hennessy Chadwick ●
- Muffet Chatterton
- Lauren Clausen ●
- Gizella Crawford ●
- Judge J. Elizabeth Cremens (Ret.) ●
- Cordy Elkins
- Andrea Falcone ●
- Heather M. Ford ●
- Ronald and Diana Garmey
- Maureen Gates
- Megan Goddard ●
- Ruth E. Goode
- LeAnne Grillo ●
- Rashonda Hosendove
- Emily Iacovelli
- Judith A. Iannaccone ●
- Catherine Kelly
- Shahn and Edwin Knights ●

* Deceased ● Daisy Circle: 3+ years of consecutive giving ● Amy Brewer Society: Gifts of \$100+ from Girl Scout alums age 35 or under



FALMOUTH ROAD RACE

Celebrating our fifth consecutive year, Team Run Like a Girl Scout once again laced up their sneakers for the renowned Falmouth Road Race! Our dedicated 13-member team embarked on the scenic route from Woods Hole to Falmouth Heights and rallied together to raise nearly \$20,000 through the ASICS Falmouth Road Race “Numbers for Nonprofits” Program. We extend our deepest gratitude to each member of Team Run Like a Girl Scout.

- Christine Bahtiarian
- Alicia L. Brock-Fisher
- Muffet Chatterton
- Maureen Gates
- Rashonda Hosendove
- Emily Iacovelli
- Catherine Kelly

- Erin Leary
- Natalie MacVarish
- Michelle O’Connell
- Kim O’Hanlon
- Heather Oblon
- Christine Simoni

David Koenig
 Laura and Peter Lane
 Katherine and Leroy Le Lacheur ●
 Erin Leary
 Catherine LeBlanc ●
 Ruth D. Leiby ●
 Caryn A. Libbey, MD ●
 Diane L. Longtin ●
 Natalie MacVarish
 Heather Oblon
 Michelle O'Connell
 Kim O'Hanlon
 Cathy F. O'Neil
 Melissa A. Palmer ●
 Patricia and William Parcellin ●
 Jane Puffer ●
 Janet Richardi
 Wyley and Suellen Robinson ●
 Jill and Jane Rothenberg-Simmons
 Paula and Paul Ruozi ●
 Linda Schuller ●
 Rebecca Schultzberg
 Mary Shapiro
 Sarina Sherwin
 Charles Shirley
 Angelene Simonello
 Christine Simoni
 Jonathan Stevens
 Eileen B. Sullivan ●
 Laura Van Zandt
 Barbara E. Wolfinger ●
 Zuania Wood ●

\$500-\$999

Anonymous ●
 Jan Aldrich ●
 Tara Alex
 Sarah Arscott
 Brian A. Aulenbach ●
 Shant Banosian
 Anne Brooks
 Jennifer Brontas ●
 The Buco Family
 Hope Burnside
 Jean Mangas Carr ●
 Mark E. Chadbourne
 Laura Chadwell ●
 Jenny Chase
 Jennifer P. Coombs
 Abigail Clutz and Pedro Teixeira ●

Charles and Mary Lou Dolan
 Ann Duffy
 Debbie Folan
 Aimee Foley
 Jaylan Fraser-Mines ●
 Lyla Goldstein* ●
 Kristen M. Gryglik ●
 Meaghan Hand
 Donald S. Hennigar
 Devrie Intriligator
 Martha Lee Jones and
 Frederick Augenstern ●
 Pamela Kelleher
 Catherine Kelly
 Susan D. Kohlman ●
 Deborah M. Kolb ●
 Becca Kornfeld
 Katelyn Lantz ●
 Joanna Lenahan ●
 Nancy F. Lewis ●
 Julie Linnell Cowan
 Lan Marinelli ●
 Mary McNiff ●
 Mary E. Meehan
 Elaine B. Mills ●
 Nancy and Richard Mobley
 Cesira Newcomb
 Ronald and Ren O'Connell ●
 Kimberly O'Neil ●
 Margaret and Stephen Ober ●
 Carmen Pancerella ●
 Pamela and Richard Paulsen ●
 Andrea Paulson ●
 Erica Payne
 Peter and Inger Rhoads ●
 Janice Ruell and
 Stephen Mongeau ●
 Elbert Ruff, Jr.
 Miriama Sano
 Ritchie B. Saunders ●
 Cindy Schatz ●
 Christine C. Schuster
 Martha and Robert Sheridan ●
 Gary Silacci
 Felice Silverman ●
 Gretchen S. Slemmons ●
 Michael Sutphin
 Susan B. Tierney ●
 Orla Toomey
 Kyla Triveri
 Karen Turner

\$250-\$499

Anonymous ●
 Hillary Abbey ●
 Nancy I. Aicardi ●
 Tracy Alexander
 Dorothy R. Amirault-Thibodeau ●
 Tracey Barker
 Julia G. Barker
 Sarah Becker
 Melissa Berry
 Jacqueline Bessette
 Brian G. Bishop ●
 Anne L. Boas
 Paul Brontas
 Mary Margaret Browne ●
 Kimberly Carlozzi
 Skip Carver ●
 MariaAnn Catino
 Nicole Cincotta
 Tyla Corfield
 Bill DiOrio
 Danielle Dulchinos ●
 Carolyn Dwyer
 Karan Dyson
 Anne Marie Edenhofner
 Martha and Paul Elkins ●
 Nanae and Joseph Ervin ●
 Lauren Fitch
 Trevor Frankel
 Richard and Mary Anne Galehouse
 The Gauthier Family ●
 Amy C. Gindel ●
 Robert Griffin
 Mary and Rene Guilmet
 Kathy Hahn ●
 Sally D. Hamblen ●
 Brenda Haynes and Adam Koppel
 Maura Herson ●
 Debra Holland and George Watson
 Donald Holmes
 Nance and Michael Hooper ●
 Elaine Hornbeck
 Winifred E. Hummel ●
 Stephanie L. Johnson ●
 Freddie Kay, Esq. ●
 Maureen E. Kelleher, PhD
 Sarah Kelley ●
 Jenna LaCava
 Elisa Lapierre
 Amina Lobban

- Kristin and Matthew Lynch ●
- Elizabeth MacKenzie
- The Major Family
- Katherine Martel
- Anne M. Mastro-Valade
- Liz Matson
- Beth McDermott
- Peg Merzbacher ●
- Marcia Metz
- Regina M. Mullen ●
- Elizabeth Murphy ●
- Kathryn and Glen Murphy
- Patricia Niehm
- Marie B. Normoyle
- Robin O'Brien
- Michelle O'Connell
- Halle O'Connor
- Anna O'Driscoll
- Mary Ann O'Hara and
Maureen Hurley ●
- Kathryn O'Neill
- Evalyn O'Rourke
- Helyn Oatis
- Sarah Pakstis
- Shannon M. Panchuk
- Michelle Peterson ●
- Nicky Preble ●
- Katherine Reid
- Susan C. Ross
- Shelby Saad-Callahan
- Patricia Satterhwaite
- Rachael Scanlon
- Joanne Shapiro ●
- Lauretta Siggers ●
- Dr. Elizabeth Simmons ●
- Benjamin F. Smith ●
- Theresa A. Spliedt
- Janice Stratford ●
- Cathleen and John Sullivan ●
- Heidi Sullivan
- Linda and Timothy Sullivan
- Judith R. Sunblade ●
- Debbie Terman ●
- Marielle Thorne ●
- JoAnne F. Tower ●
- Christopher Tuccolo
- Heli Tuomi Carlile
- Joseph Turner
- John Turner
- Van Roggen Family



COOKIES & COCKTAILS

Boston's most delectable culinary affair returned in November with local chefs showcasing their creativity by transforming beloved Girl Scout Cookies into extraordinary culinary delights. With over 200 enthusiastic attendees in PwC's beautiful Seaport office, this year's event was a resounding success, raising over \$62,000 to support future women leaders. Guests savored an array of innovative, cookie-inspired creations, from savory sensations to sweet showstoppers, each dish reflecting the remarkable talent and ingenuity of our esteemed chefs. The night's winners included the Crowd Favorite, Markita Durant of MarTia's Cakes (for the second year in a row!); the Judge's Pick, Valerie Nin, from Grill 23 & Bar; and the Most Unique Dish, which belonged to Andrew Beer of Rose Town Kitchen & Bar.

- Amy Wendel
- Kathleen Wetherby-Zenzie
and Henry Zenzie ●
- Shelly Wharton ●
- Judith Wilchynski
- Denise Wilson ●
- John Wood
- Jennifer Woodman
- Donna Yang ●

\$100-\$249

- Yusef Abdolmohammadi
- Rosalin Acosta
- Debbie Adelson
- Catherine Ahern-Treco ●
- Lisa Ajoian Ducharme
- Amanda Allgood
- Erika Alter
- Devon Ancich
- Aliyah Anderson
- Christina and Roland Andersson

Leslie Anselme
 Charlotte C. Anthony ●
 Diana Arntz
 Margaret E. Atkins
 Marah Atwell ●
 Kerri Babish
 Karen L. Bacchi ●
 Brian Bagenstose
 Jennie Lee Colosi Balboni ●
 Christine Baranofsky
 Abel Barbour
 The Baronofsky Family ●
 Martha J. Barry
 Jennifer Bassett
 Nancy B. Bates
 Sarah Baun
 Gail Sullivan Begley ●
 Lindsay and Paul Belcher
 James Belliveau
 Serenity Belo
 Beth and Michael Benjamin
 Ellen and Dana Bennett
 Barbara and Carl Berke ●
 Jeffrey B. Bird
 Eliza Blay ●
 Dr. and Mrs. Charles M. Bliss, Jr. ●
 Dorothy Boisvert ●
 Carol W. Bowen ●
 Kathleen Bradley Colwell
 Justin Brovitz
 Samantha Burgess
 Joan and Charles Burnham ●
 Eric Byrd-Krueger
 Linda Byron
 Dominique Calixte
 Megan Callahan
 David Cammarata ●
 John Cantalupo
 Heather and James Caplan ●
 Blaise Carino
 Jennifer Carr
 Dayle Carroll
 Kevin Casey
 Frederick Caswell
 Lindsay H. Cavanagh
 Constance Cepko
 Emily Chen
 Judith and Jonathan Chiel
 Danielle Chisholm
 Carolyn Cichon

Emily Cislo ●
 Jennifer Clark
 The Clark Family
 Theresa Cleary
 Gayle Clemenzi
 Rebecca Cohen
 Cristina Colanti
 Louise V. Condon ●
 Katherine-Marie Conover
 The Corliss Family ●
 Caroline Corwin ●
 Margaret Costello
 Callie Crossley
 Brendan Crowley
 Martha H. Curtis
 Michele Dandrea
 Feizhen Dang
 Rosemarie Day and
 Stephen Churchill ●
 Judith and Damon DeHart
 Kelly Del Sorbo
 Heather DeProfo
 Erin DeRoma
 Joanne Dickie ●
 Carrie G. Dirats
 Rachel Dodos ●
 The Doherty Family ●
 Dr. Lena Ebba Dohlman-Gerhart
 Christina Donauer
 Kerry Donohue
 Deborah Downing
 Janet and George Drummey ●
 Katherine Durant ●
 Rody Durham
 George Earley
 Francine C. Edwards
 MJ Edwards
 April Effort Eugene
 Joyce and Sheldon Ehrenzweig ●
 Susan M. Eisen
 Sharon E. Febo
 Nina Ferrari ●
 Wendy Finnerty
 Julie Fisher
 Elaine H. Fite ●
 Alison and Michael Foley ●
 Rachel Ford
 Kelsey Frasca
 Tami Fraser and Dianna Mines
 Allison Fraske-Firshein

Louise and Richard Freeman
 Gerry Fulbrook-Hanna ●
 Grace Garcia
 Pat and John Gardner
 Patricia Gerrior ●
 Jennifer Gillespie
 Amanda Gilmour
 Katherine Glaess ●
 Ellen Glazerman
 Joseph and Joan Gniadek
 Erin Godfrey
 Richard and Anna Goettle ●
 Lauren Goglick
 Katherine Golden
 Elsa Gomes Bondlow
 Audrey S. Gordon
 Chandresh Govani
 Frank and Maxine Grant ●
 The Greimann Family
 Timothy Griffin
 Michael Grillo ●
 Maureen E. Groves ●
 Susan M. Gryglik-Reilly ●
 Ravi Gudipati
 Kelly Guterl
 Lydia Hamilton
 Amanda Harring-Abbott
 Katie Harrington ●
 Michael Harrington
 Amira Hasenbush
 Karyl and Richard Hayes ●
 Georgette Y. E. Henrich ●
 Darby Hery
 Suzanne Hinckley
 Elizabeth Hixson
 Wayne B. Hodgkin, Sr. ●
 Stephanie Hollander
 Junaid Hoosen
 Maureen Huminik ●
 Heidi and Joseph Hurley
 Janna Hutz ●
 Mary Lou Jackson ●
 Courtney Jacobovits
 Phyllis and Andrew Jennings ●
 Steven Jolan ●
 Alyssa Jones
 Wallace Jones
 Sai Keerthy Kakarla
 Rosalind Kaplan
 Dawn Kay

Rachel King
 Danielle Kinkel
 Kevin Kispert
 Amy Kline ●

The Klofft Family ●
 Amy and William Kormos ●
 Kristin Laliberte
 Scott Lanciloti

Keith G. Larson
 Simone Lauchart
 Gene Lee
 Minhua Lee-Nurse

FRIENDSHIP CIRCLE

“I support GSEMA as a sustaining member because I believe in its long-term vision. Monthly giving provides the steady foundation this organization needs, and every girl deserves to thrive.” – Sarina Sherwin



In addition to being a Friendship Circle monthly donor, Sarina has been a troop leader since 2020, an experience that she finds incredibly meaningful. Seeing how quickly Girl Scouting can shape a girl’s confidence and sense of self, she deepened her commitment by joining the Women’s Advisory Network to contribute her professional skills and the Gold Award Committee to mentor older girls as they take on big, meaningful challenges.

Leslie Anselme
 Kerri Babish
 Lori Spinella Beverage
 Mary Browne
 Jeannette Buntin
 Cynthia Campbell
 Christine Candler
 Laura Chadwell
 Cheryl Chisholm
 Gayle Clemenzi
 Katherine-Marie Conover
 Julie Linnell Cowan
 James Cronan
 Heather DeProfio
 Danielle Dulchinos
 Lauren Fitch
 Barbara Fortier and Karen Edlund
 Annie Garmey

The Gauthier Family
 Belinda Harter
 Michelle Hecht
 Wayne B. Hodgkin, Sr.
 Rashonda Hosendove
 Clarice Johnson
 Victoria Johnson
 Sarah Kelley
 Sara Welch Klingener
 Susan Kohlman
 Joanna Lenahan
 Jennifer LeValley
 Amina Lobban
 Cheryl Lopes
 Michelle Major
 Diane McLoughlin
 Jessica Miller
 Elizabeth Morano
 Rebecca Myers

Bess Newton
 Sarah Pakstis
 Carmen Pancerella
 Nicolette Preble
 Suzanne Procurot
 Christine Robbins
 Karen Schofield
 Michelle Schofield
 Linda Schuller
 Rebecca Schultzberg
 Sarina Sherwin
 Angelene Simonello
 Benjamin Smith
 David Sousa
 Ajace Tsatsarones
 Brenda Wheelock
 Stacy Wilbur
 Judith Wilchynski
 Zuania Wood

The Girl Scouts of Eastern Massachusetts Friendship Circle recognizes a group of donors who support Girl Scouts through monthly, recurring gifts. Learn more about joining at gsema.org/friendshipcircle.

Michael and Ana Lenahan
 Elizabeth Lennox
 Sherilyn and David Levy ●
 Jane Li ●
 Haiyan Liang
 Li-Jen Lin and Andrew Gerber ●
 Li Ling
 Susan A. Lisa ●
 Faith Litchock-Morellato
 Cari Loftus
 Cheryl Lopes
 Amy Lu
 Matt MacDonald
 Christina Magovern
 Tarra Marchetti ●
 Arthur Marshall
 Peter Martin and Elizabeth Ryder
 Mary Martini
 Katie-Ann Mason

Catherine and Andrew Mather
 Diane Matson
 Brenda McAuliffe
 Patrick McLoughlin ●
 Joyce A. McMahon ●
 Sarah J. Medina
 Jill Meixel
 Angela Menino
 Brenda Mercier
 Deborah and Richard Minns ●
 James Montague
 Sarah Montgomery
 Kerri Mooney
 Holly Morin
 Lisa R. Moura
 Jocelyn Murta
 Carrie Myers and Bess Newton
 Martha J. Myers
 Debra Nagle

James Nee
 Shannon P. O'Brien ●
 John O'Connor
 Sky M. Olander
 Pamela O'Leary ●
 Krista Olson
 Norma Osborn
 Shannon Ouellette
 Bhavesh Patel
 Carol L. Patey ●
 Dena Patterson
 Mary Rose Pearo
 Chris Pereira
 Jennifer Pham ●
 Dawn Pischetola
 Valerie Pontiff ●
 Connie Postma and Richard Kiley
 Sharmon Prialux
 Suzanne Procurot ●
 Carolyn and Robert Pruyne
 Sandra Publicover ●
 Stephanie and Michael Quinn ●
 Erika Reinfeld
 Anna-lee Riani
 Rachel Rich
 Karolyn and Bruce Ricker ●
 Michelle Ridgley
 Steven and Susan Ritter
 Christine Robbins ●
 Alexandra Rodday
 Martha Ross
 Hope Roth
 Jonathan Rozier
 Danielle Russo
 Susan and Matthew Ryan ●
 Sandra E. Sacco ●
 Renee Sack ●
 Omar A. Saldaña ●
 Susanne Salerno
 Catherine and William Salisbury ●
 David Salzman
 Travis Sammons ●
 Loredana SanduVieil
 Nancy Santoro
 Jen Savard
 Lisa Scarfo
 Alison Schmidt
 Maria L. Scott
 Risa Shames and Neil Silverston
 Sandra Shapiro, Esq.

GIFTS IN KIND



ABC Bakers/Hearthside
 Boston Crawling
 Boston Marriott Copley Place
 Brattle Book Shop
 Laura Chadwell
 Clay Lounge
 COJE Management Group
 Coolidge Corner Theatre
 Foundation
 Discovery Museum
 Emerson College
 Feld Entertainment
 Formaggio Kitchen
 Kendra Scott
 Mallory Portraits
 Mamaleh's Delicatessen
 MarTia's Cakes
 Mass Bay Lines
 NOCA Glass School
 Normandy Farms
 Campground
 Olfactory NYC
 Pammy's
 Peabody Essex Museum

Pottery Mill LLC
 Rainbows Pottery Studio
 Roche Bros. Supermarkets Inc.
 Royal Jewelers
 Lynda Schuler
 Swan Boats, Inc.
 Talmi Entertainment
 The Cabot
 The Dan'l Webster Inn & Spa
 Trillium
 VINCE
 Wachusett Mountain
 WAWW Puzzles
 Wegmans
 WS Development Associates
 LLC
 Zoo New England

- J. Andrew Shepardson
- and William Bulman
- Julie C. Sibert
- Lisa and Domenic Silletti
- The Sirull Family
- Stephanie and David Skolnick
- Susan Smith
- David Sousa
- Stacy E. Spies
- Stephanie Sprague
- Jane Steinmetz
- James and Eileen Sterio
- Dolores and George Stevens
- Jessica Stokes
- Shannon Stott
- William Sullivan
- Tyler Sundet
- Beverly Tai
- Megan Throlson
- Jennifer Tieri
- Deborah Tinlin
- Deborah Toppan
- Ajace Tsatsarones ●
- Vickie and Dean Turcotte
- Suzanne and Joseph Turner ●
- Amy vanNederpelt ●
- Jill Vernes ●
- Justin Vogel
- Ellen Volpe
- Louise Waldron-Carter ●
- Chrissy Warren
- Gayle Weaver
- Suzie Weaver
- Sara Welch Klingener
- David Wells
- Ellen and Marc Weners ●
- Michael and Jo Karen Werner
- Elizabeth West
- Catherine M. Weston ●
- Nick Whise
- Stacy Wilbur ●
- Kelly Wilkie
- Abigail Williams
- Allison Wolosz
- James Wylie
- Alicia Yeh
- Diana Young ●
- Kamella Zimmerman



LEADING WOMEN AWARDS

Girl Scouts of Eastern Massachusetts proudly hosted the 31st annual Leading Women Awards on March 20, 2024, honoring three exceptional women whose leadership, resilience, and dedication have made a profound impact on our communities. This prestigious recognition celebrates individuals who embody the values of leadership, integrity, and service at the heart of the Girl Scout Movement. This year’s distinguished honorees included:

Roxann Cooke, *Managing Director and Consumer Bank Regional Director, JPMorgan Chase*

Ami Kuan Danoff, *Co-Founder and Chief Financial Officer, Women’s Foundation of Boston*

Lindsay Jubelt, MD, MS, *Chief Population Health & Medical Officer, Mass General Brigham Health Plan*

Additionally, PwC was recognized with the Corporate Changemaker Award for its commitment to positive change and community impact. The event raised an impressive \$185,000 to support GSEMA’s mission, ensuring that future generations of Girl Scouts continue to thrive as leaders and changemakers. Attendees left the morning inspired and energized after an engaging fireside chat moderated by NBC-10 Boston Commentator Sue O’Connell.



In Memoriam

The following donors gave in memory of the individuals whose names are listed in italics.

In Memory of Jillian Beach

Donna McLellan

In Memory of R. Clare Bennett

Deborah Terman

In Memory of Carol A. Borggaard

Barry Panter

In Memory of Rita P. Cassidy

Lori Spinella Beverage

Skip Carver

Lynn Cutter

Krystal Fleming

Elizabeth Hale

Janice Hale

Georgette Henrich

Christina Magovern

Nancy Pollock

Karolyn Ricker

Alison Schmidt

In Memory of Marilyn Dolan

Charles Dolan

Diane Donovan

Bonnie Doolin

Wendy Edelman

Laura Lorenz

Patricia Reidy

Anna-lee Riani

Phoebe Sullivan

William Sullivan

Dick Tracy

Barbara Wyman

In Memory of Robert E. Edwards

Francine Edwards

In Memory of Helen Goodwin

Abigail Alves

In Memory of Shirley Hamblen

Sally Hamblen

In Memory of Martha “Pat” Hayden

Martha Curtis

In Memory of Marion Healy

Jill Oetheimer

In Memory of Melanie Henriques

Deborah Terman

In Memory of Ruth Ingalls

Sandra Neunaber

In Memory of Joanne Johnson

James Sterio

In Memory of Ethel Leonard

Ann Carney-Pomper

In Memory of Emma Inman Lloyd

Nancy Mobley

In Memory of Cheryl Lund

Dayle Carroll

In Memory of Dorothy Macaione

Dorothy Amirault-Thibodeau

In Memory of Mary-Ann Macaione

John Turner

In Memory of Linda Mahoney

Maureen Groves

In Memory of Eileen McCaffrey

Antoinette Wollman

In Memory of Leslie A. Power

Joan Desgroseilliers

In Memory of Barbara Ring

Rosalind Kaplan

In Memory of Dorothy Rosa

Lisa Moura

In Memory of Polly Seguin

Carol Patey

In Memory of Sarah Cohen Shapiro

Sandra Shapiro

In Memory of Anna Silvia

Melinda Ginches

In Memory of Bertyne Smith

Karen Clark

In Memory of Louise J. Smullen

Abigail Alves

In Memory of Patricia E. Spinella

Brenda Mercier

***In Memory of Augusta Crocker
Stewart***

Richard Stewart

In Memory of Shanel F. Turner

Karen Turner

In Memory of Jennifer Verrette

Wendy Verrette

In Memory of Dave Whalgren

Kathleen Waldron

A Girl Scout Legacy

In January 2024, GSEMA lost a true Girl Scout friend, Augusta “Gussie” Crocker Stewart, who proudly carried on the legacy of her namesake great aunt, Augusta Batchelder Hartt of Brookline, Massachusetts. Continuing a long tradition of generosity, and as a tribute to her passion for the organization, Gussie’s husband, Dick Stewart, made a generous gift to the council in her honor.

“Aunt Augusta,” as Gussie fondly called her, dedicated her life to furthering the ideals of Girl Scouting and bringing it to girls. She was known for her marked executive ability, combined with a broad interest in social service. Attending the First National Girl Scout Leader Training School held at the Winsor School in Boston in 1917, Mrs. Hartt received her commission as a Girl Scout officer from Juliette Gordon Low. That same year, she organized the first Girl Scout Drum & Bugle Corps in the United States in Brookline. This Corps served to stimulate Liberty Bond Sales during World War I. Mrs. Hartt visited many countries throughout the world, often in the most primitive style, documenting her journeys through photographs and writing. Her camping experiences and her love of nature and the outdoors were a lifelong joy to her. Her impact on the early days of the Girl Scout Movement was enormous.

Gussie carried on Aunt Augusta’s passion for nature and artistic expression. After graduating from Colby Sawyer College, she went on to pursue her lifelong artistic passion at the Museum of Fine Arts in Boston and the deCordova Sculpture Park and Museum in Lincoln, Massachusetts. An avid gardener throughout her life, she contributed a giant bed of colorful, tiger tawny day lilies, which continue to thrive today at Cedar Hill. Her infectious laugh and energy will be missed by all who loved and admired her.



Augusta Hartt was the first commissioner of Massachusetts Girl Scouts, Inc. and served in that position for 10 years, overseeing a period of unprecedented growth in membership and scope.

She received her commission as a Girl Scout officer from Juliette Gordon Low. As Captain of the famous Troop #2 of Brookline High School, she organized the first Girl Scout Drum & Bugle Corps in the United States in December 1917. This Corps served to stimulate Liberty Bond Sales during World War I.

HOW WE'RE FUNDED

OUR FUNDING COMES FROM FIVE PRIMARY SOURCES



PRODUCT PROGRAM

Proceeds from Girl Scout Cookie and Fall Product Programs



PROGRAMMING FEES

Participation fees for camp, events, and other programs



PHILANTHROPY

Charitable donations from individuals, corporations, foundations, and other partners



RETAIL

GSEMA store proceeds from badges, uniforms, gifts, supplies, and merchandise



OTHER INCOME

Investments and miscellaneous revenue

Your contributions help us build girls of courage, confidence, and character that make the world a better place.



FINANCIAL OVERVIEW

Girl Scouts of Eastern Massachusetts, Inc., Statement of Activities and Changes in Net Assets for the Year Ended September 30, 2024

OPERATING REVENUES AND OTHER SUPPORT:

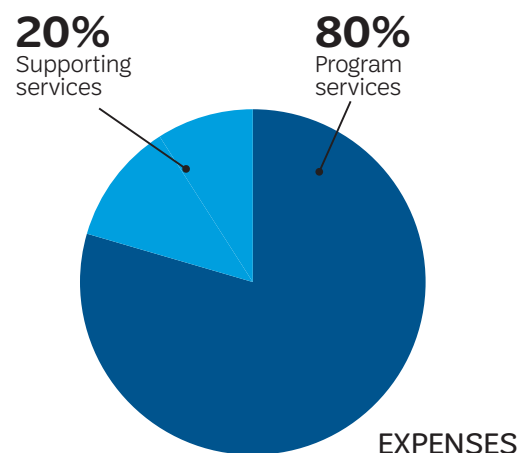
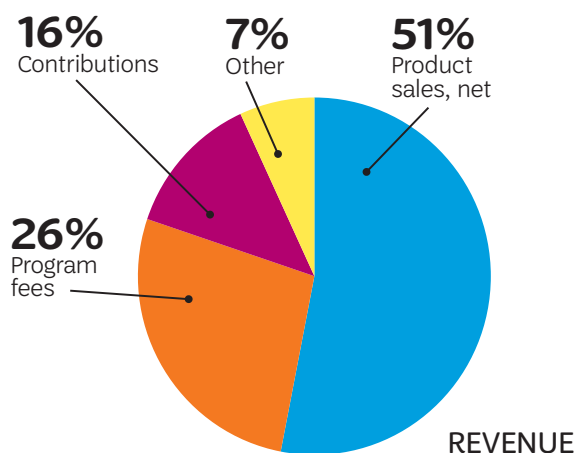
| | |
|---|-------------------|
| Product sales, net | \$7,491,622 |
| Program service fees | 3,829,678 |
| Contributions | 1,826,928 |
| Investment return appropriated for operations | 492,000 |
| Net merchandise sales | 324,129 |
| Interest, dividends, and miscellaneous revenue | 155,061 |
| Total operating revenues and other support | 14,119,419 |

OPERATING EXPENSES:

| | |
|---------------------------------|-------------------|
| Program services | 11,513,936 |
| Supporting services | 2,935,313 |
| Total operating expenses | 14,449,249 |

| | |
|---------------------------------------|---------------------|
| Changes in net assets from operations | (329,830) |
| Non-operating activities | 3,576,597 ** |
| Changes in net assets | 3,246,766 |
| Net assets, beginning of year | 23,126,588 |
| Net assets, end of year | \$26,373,354 |

** Included in non-operating activity is a net donation of \$669K of campsite property.



Girl Scout Promise

On my honor, I will try:
To serve God* and my country,
To help people at all times,
And to live by the Girl Scout Law.

Girl Scout Law

* Members may substitute for the word God in accordance with their own spiritual beliefs.

I will do my best to be
honest and fair,
friendly and helpful,
considerate and caring,
courageous and strong,
and responsible for what I say and do,
and to respect myself and others,
respect authority,
use resources wisely,
make the world a better place,
and be a sister to every Girl Scout.



© MELISSA OSTROW

girl scouts
of eastern
massachusetts

265 Beaver Street
Waltham, MA 02452
customer care@gsema.org

GSEMA.ORG
f o i n x @